

116 & 118 South Washington | Hinsdale, IL

4,882 sq. ft. on two floors



Property Highlights

- ◆ Renovated building in downtown Hinsdale, IL
- ◆ 116 South Washington 3,554 first & second floor
- ◆ 118 South Washington 1,330 finished office
- ◆ Finished offices
- ◆ Excellent retail, office or financial services use
- ◆ 6 on-site parking spaces
- ◆ Close to Metra station

For more information contact:

Vanessa Taylor

630-605-3422 cell

vtaylor@waypointproperties.com

Waypoint Properties, LLC

10 West Hinsdale Avenue

Hinsdale, IL 60521

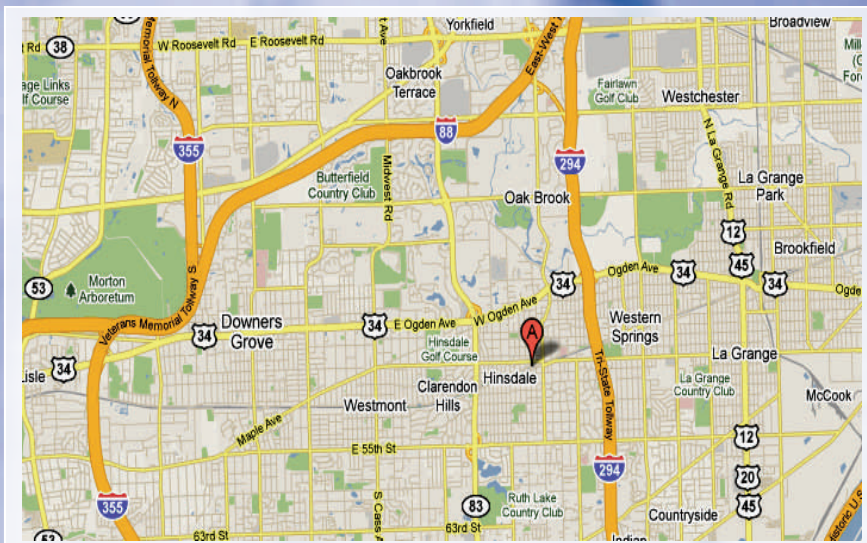
630-590-5501

www.waypointproperties.com



All information is deemed to be reliable sources; however no guarantee is made as to the accuracy or correctness of this information. This information is for marketing purposes only and is subject to verification, price change and removal of the property from the market.

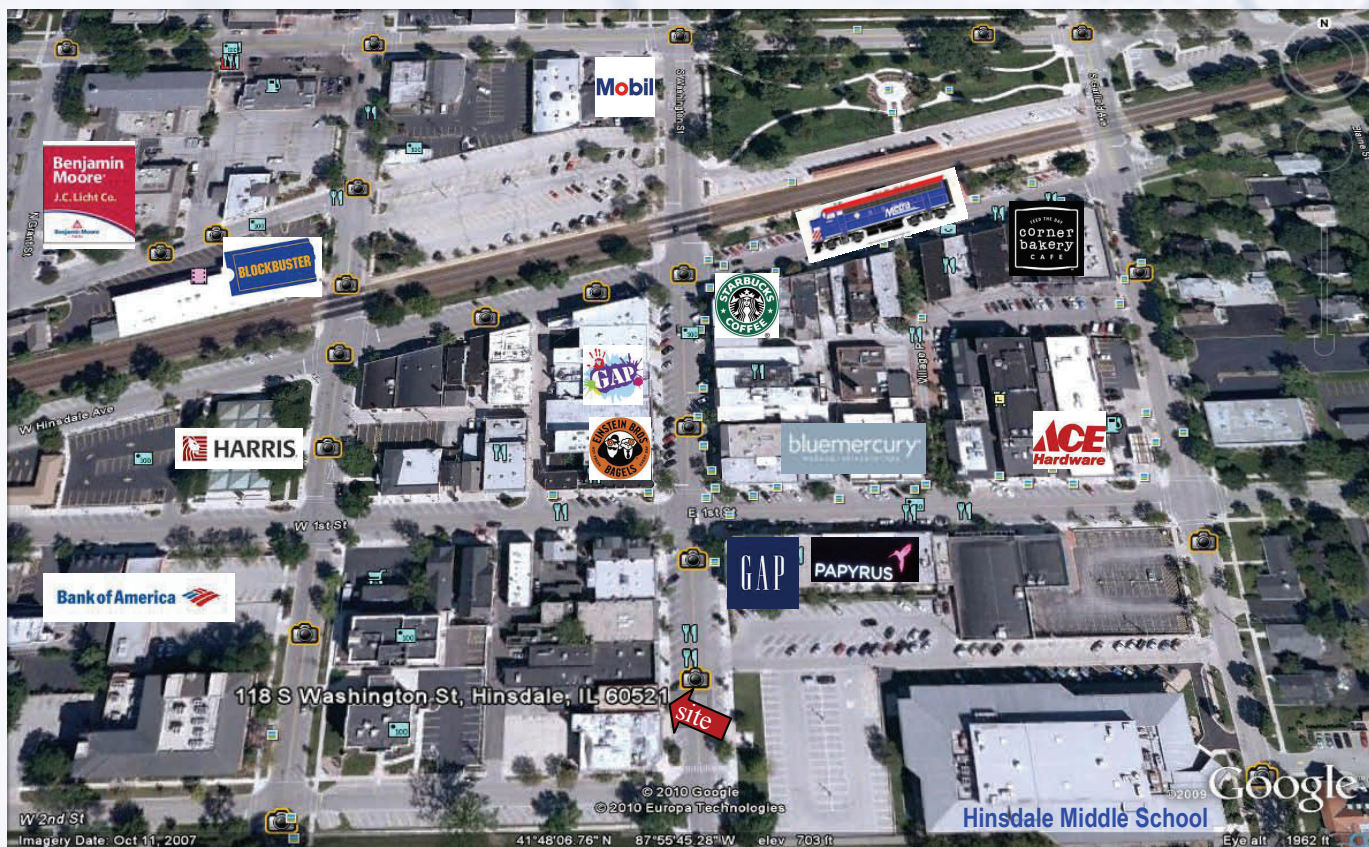
116 & 118 South Washington | Hinsdale, IL
 4,882 sq. ft. on two floors



Market Area Information

- ◆ Historic downtown retail/office district
- ◆ \$849,752 median home values
- ◆ \$200,272 average HH Income
- ◆ 17,940 Village Residents

	1 mile	3 mile	5 mile
Population	12,957	90,482	249,269
Households	4,176	34,026	97,564
Average HH Income	\$200,272	\$129,414	\$102,372
Median Income	\$137,232	\$87,632	\$73,048



For more information contact:

Vanessa Taylor
 (630) 605-3422 cell
 vtaylor@aypointproperties.com



Waypoint Properties, LLC
 10 West Hinsdale Avenue
 Hinsdale, IL 60521
 630-590-5501
 630-590-5502 fax
 www.waypointproperties.com

All information is deemed to be reliable sources; however no guarantee is made as to the accuracy or correctness of this information. This information is for marketing purposes only and is subject to verification, price change and removal of the property from the market.