

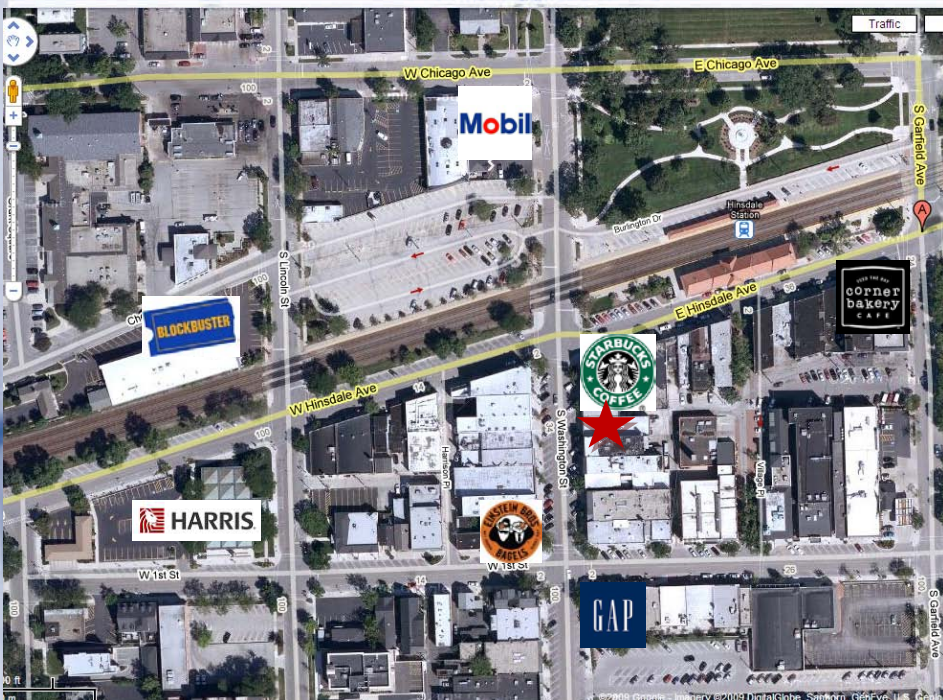
35 South Washington Avenue | Hinsdale, IL

Downtown 2<sup>nd</sup> floor space available



### property highlights

- ❖ #1 corner in town
- ❖ Available 2,015 sq. ft. on second floor
- ❖ Ideal for salon or professional office
- ❖ Newly renovated 7,000 sq. ft. building
- ❖ Suburban downtown store front building in the heart of Hinsdale
- ❖ Across the street from the Metra
- ❖ Adjacent to Starbucks
- ❖ Excellent vehicular and pedestrian traffic
- ❖ Family community with substantial disposable income



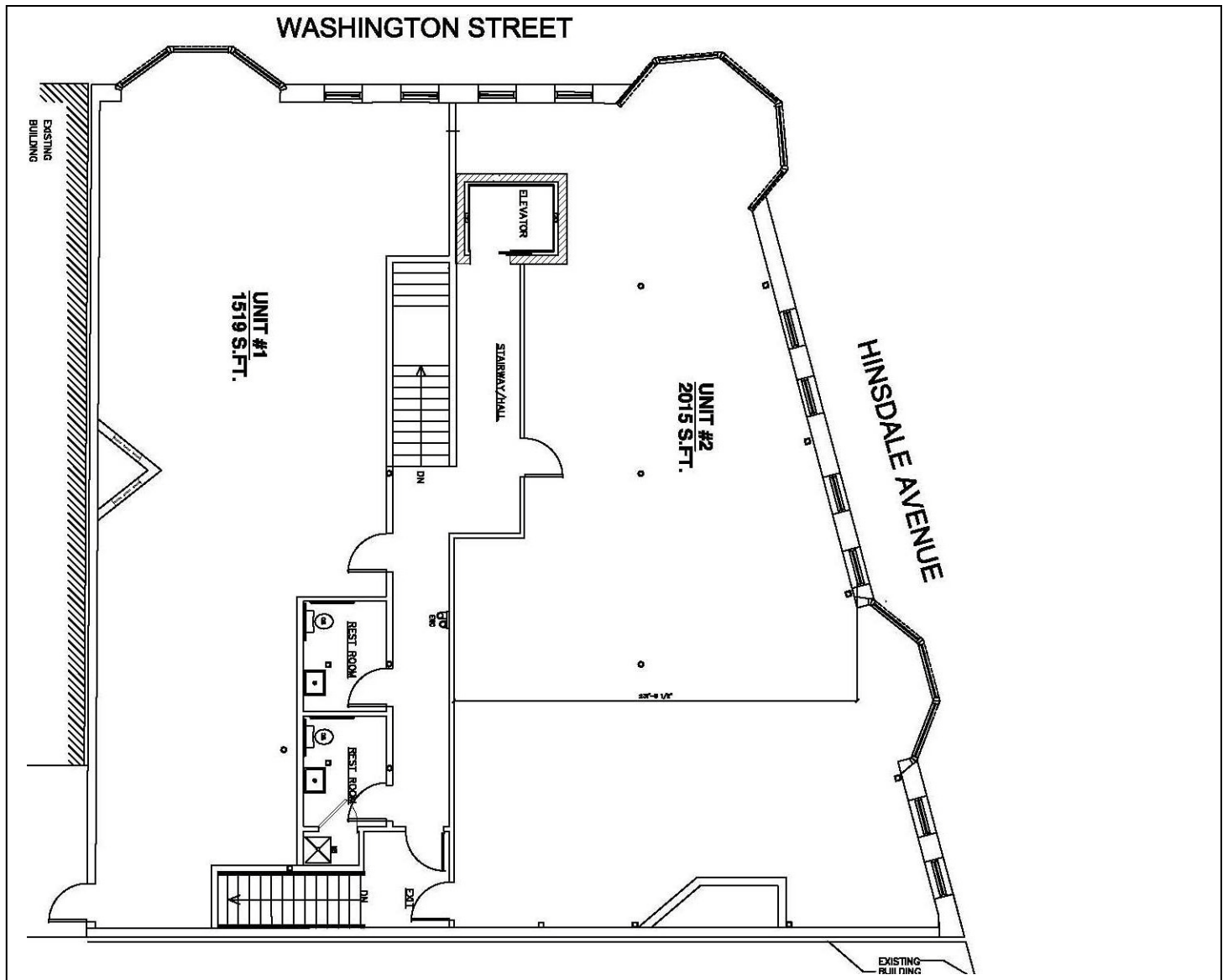
Vanessa Taylor  
630-605-3422 cell  
[vtaylor@waypointproperties.com](mailto:vtaylor@waypointproperties.com)

Waypoint Properties, LLC  
10 West Hinsdale Avenue  
Hinsdale, Illinois 60521  
[www.waypointproperties.com](http://www.waypointproperties.com)

All information is deemed to be reliable sources; however no guarantee is made as to the accuracy or correctness of this information. This information is for marketing purposes only and is subject to verification, price change and removal of the property from the market.

35 South Washington Avenue | Hinsdale, IL

Downtown 2<sup>nd</sup> floor space available



## Demographics

	1 mile	3 mile	5 mile
Population	12,957	90,482	249,269
Households	4,176	34,026	97,564
Average HH Income	\$200,272	\$129,414	\$102,372
Median Income	\$137,232	\$87,632	\$73,048

For more information contact:

Vanessa Taylor  
(630) 605-3422 cell  
[vtaylor@waypointproperties.com](mailto:vtaylor@waypointproperties.com)

Waypoint Properties, LLC  
10 West Hinsdale Avenue  
Hinsdale, Illinois 60521  
630-590-5501  
630-590-5502 - fax  
[www.waypointproperties.com](http://www.waypointproperties.com)

All information is deemed to be reliable sources; however no guarantee is made as to the accuracy or correctness of this information. This information is for marketing purposes only and is subject to verification, price change and removal of the property from the market.