

5150 Main Street | Downers Grove, IL
 1778 sq. ft. Downtown Street Front Retail



property highlights

- ◆ Main Street - Downtown Downers Grove, IL
- ◆ Multitenant building with end cap location available
- ◆ Centrally located within DuPage County
- ◆ 66,865 City Population
- ◆ \$122,371 Average Household Income
- ◆ \$90,393 Median Household Income
- ◆ Strong & diverse economy
- ◆ Vibrant major commercial corridor
- ◆ 51,074 employees
- ◆ 2,411 businesses
- ◆ Ample street parking
- ◆ Just a short walk to Metra Station
- ◆ New façade construction to occur in 2010 (see attached plans)
- ◆ Currently occupied (please do not disturb Tenant)

For more information contact:

Vanessa Taylor
 (630) 605-3422 - cell
 (630) 590-5501 - office
 vtaylor@waypointproperties.com

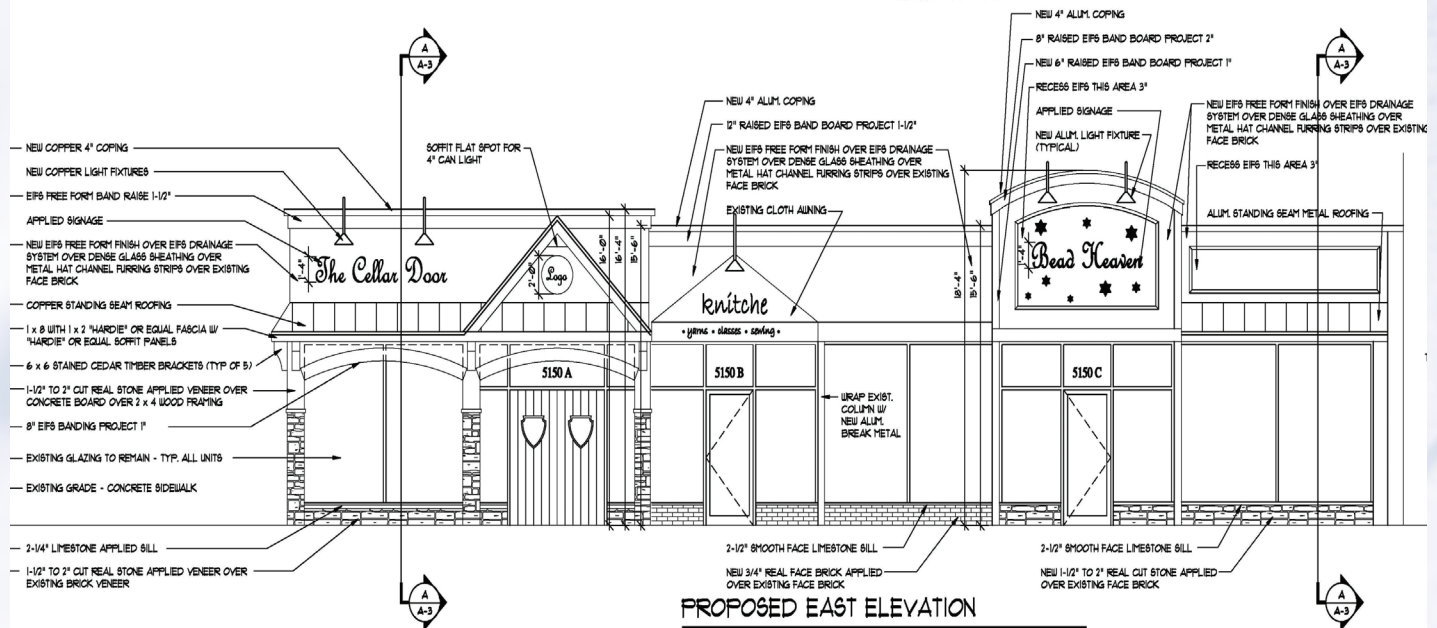
Waypoint Properties, LLC
 10 West Hinsdale Avenue
 Hinsdale, Illinois 60521
 630-590-5501
 630-590-5502 fax
 www.waypointproperties.com

All information is deemed to be reliable sources; however no guarantee is made as to the accuracy or correctness of this information. This information is for marketing purposes only and is subject to verification, price change and removal of the property from the market.

5150 Main Street | Downers Grove, IL
 1778 sq. ft. Downtown Street Front Retail



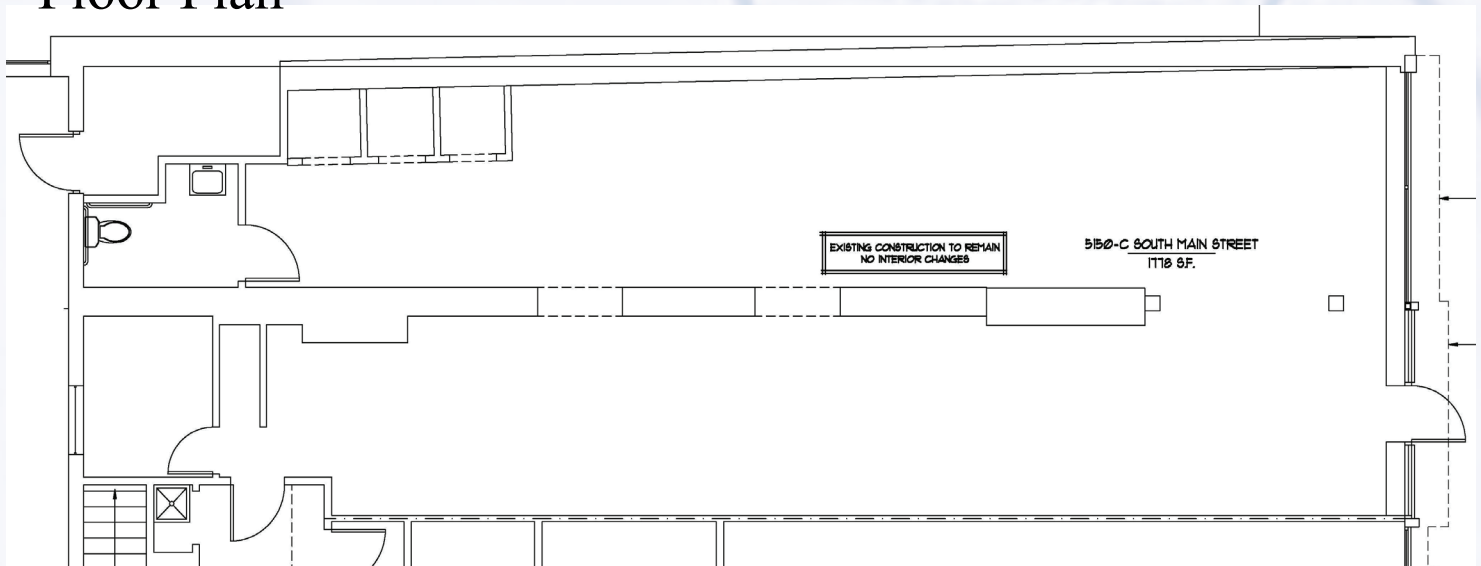
Proposed Façade Renovation



PROPOSED EAST ELEVATION

SCALE: 1/4" = 1'-0"

Floor Plan



For more information contact:

Vanessa Taylor - (630) 605-3422 cell
 (630) 590-5501 office
 vtaylor@waypointproperties.com

Waypoint Properties, LLC
 10 West Hinsdale Avenue
 Hinsdale, Illinois 60521
 630-590-5501
 630-590-5502 fax
www.waypointproperties.com

All information is deemed to be reliable sources; however no guarantee is made as to the accuracy or correctness of this information. This information is for marketing purposes only and is subject to verification, price change and removal of the property from the market.