

530 Crescent Boulevard, Glen Ellyn, IL

3,223 square feet



Property Highlights

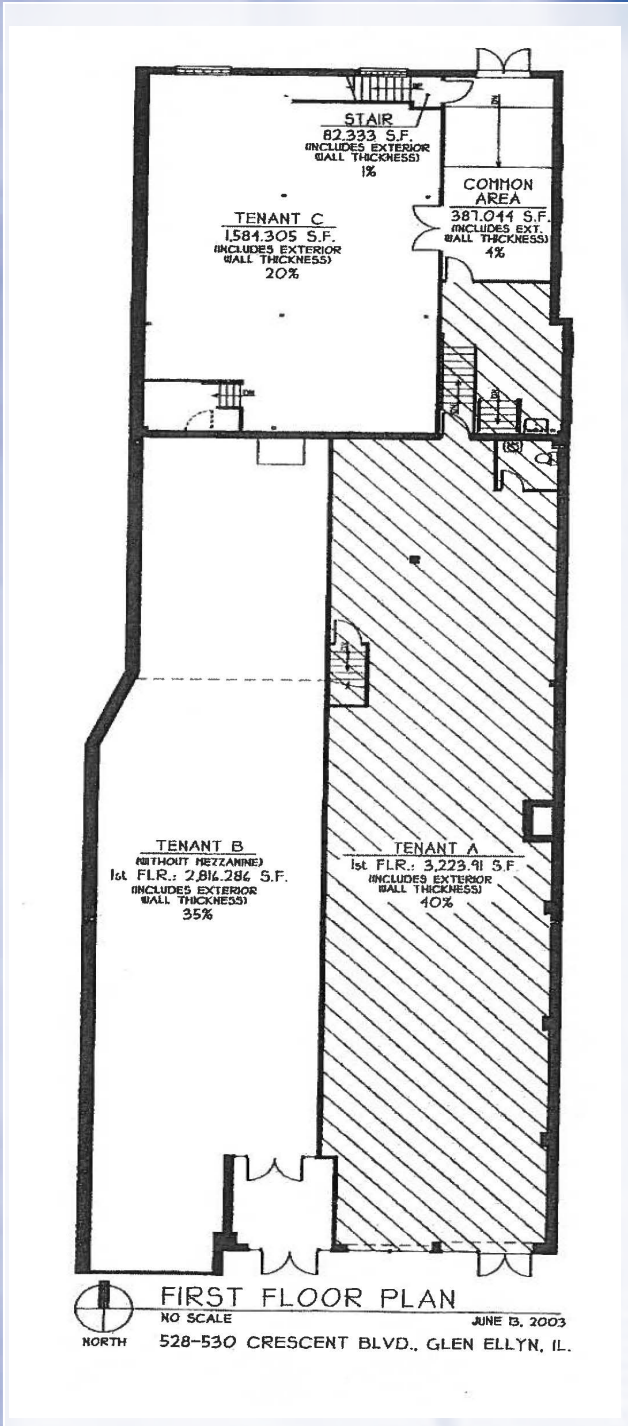
- ◆ Renovated building in downtown Glen Ellyn, IL
- ◆ Finished interior
- ◆ Excellent restaurant or retail
- ◆ Across from Metra Station
- ◆ Near Starbucks, Einstein Bagels, US Bank and Thipi Thai Restaurant
- ◆ Next to Glen Ellyn Movie Theater
- ◆ Great pedestrian traffic
- ◆ Front door street parking



For more information contact:
Vanessa Taylor
630-605-3422 cell
vtaylor@waypointproperties.com
Waypoint Properties, LLC
10 West Hinsdale Avenue
Hinsdale, IL 60521
630-590-5501
www.waypointproperties.com

All information is deemed to be reliable sources; however no guarantee is made as to the accuracy or correctness of this information. This information is for marketing purposes only and is subject to verification, price change and removal of the property from the market.

530 Crescent Boulevard, Glen Ellyn, IL
3,223 square feet



Market Information

3 Mile Trade Area:

- ◆ 116,515 Total Population
- ◆ \$91,815 Average Household Income
- ◆ 110,445 Daytime Population
- ◆ 44,869 Total Housing Units

5 Mile Trade Area:

- ◆ 272,809 Total Population
- ◆ \$92,405 Average Household Income
- ◆ 281,866 Daytime Population
- ◆ 101019 Total Housing Units



For more information contact:

Vanessa Taylor
630-605-3422 cell
vtaylor@waypointproperties.com



Waypoint Properties, LLC
10 West Hinsdale Avenue
Hinsdale, IL 60521
630-590-5501
630-590-5502 fax
www.waypointproperties.com

All information is deemed to be reliable sources; however no guarantee is made as to the accuracy or correctness of this information. This information is for marketing purposes only and is subject to verification, price change and removal of the property from the market.