

SW Corner of Chestnut and Lincoln | Hinsdale, IL  
6,270 Sq. Ft. For Lease (can be subdivided)  
968 Sq. Ft. For Lease

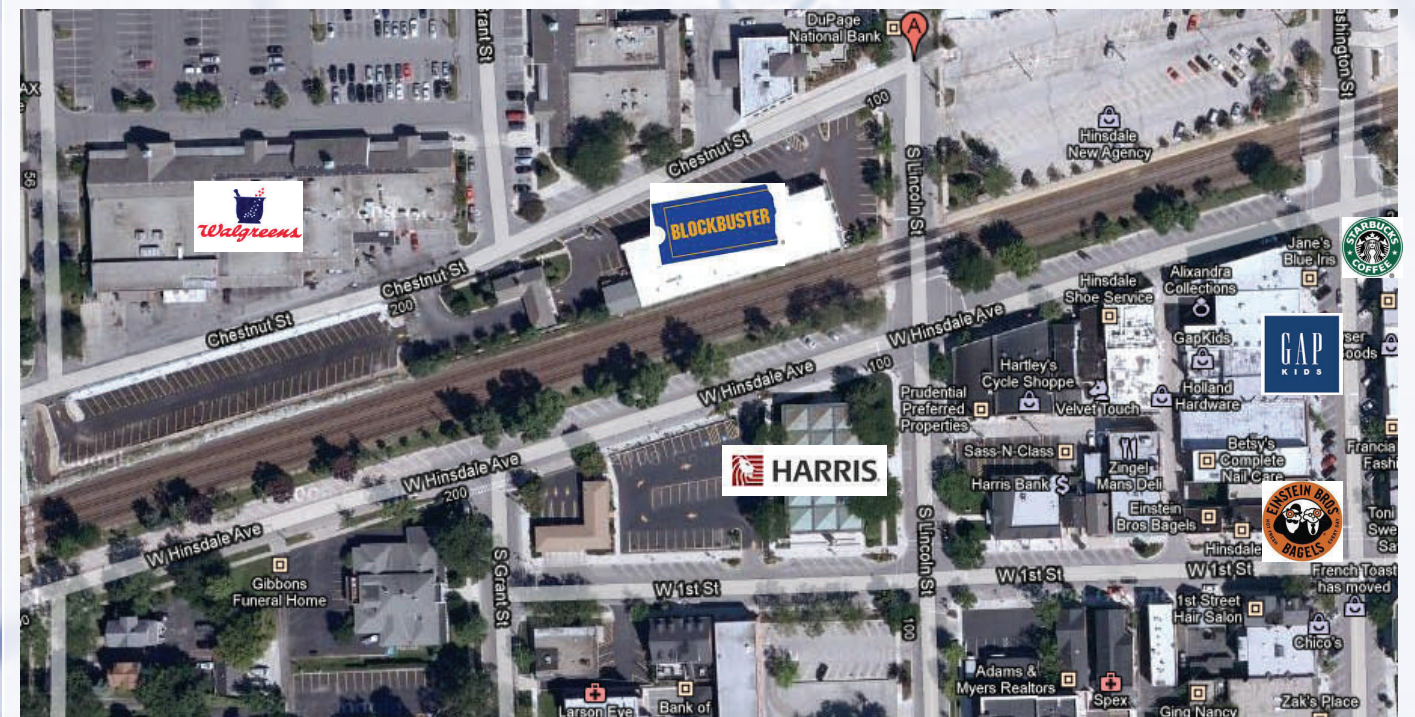


### property highlights

- ◆ Downtown Hinsdale highly visible corner
- ◆ End cap location with on-site parking available
- ◆ Just a short walk to Metra Station
- ◆ Newer construction with open floor plan
- ◆ Currently occupied by Blockbuster (please do not disturb Tenant)

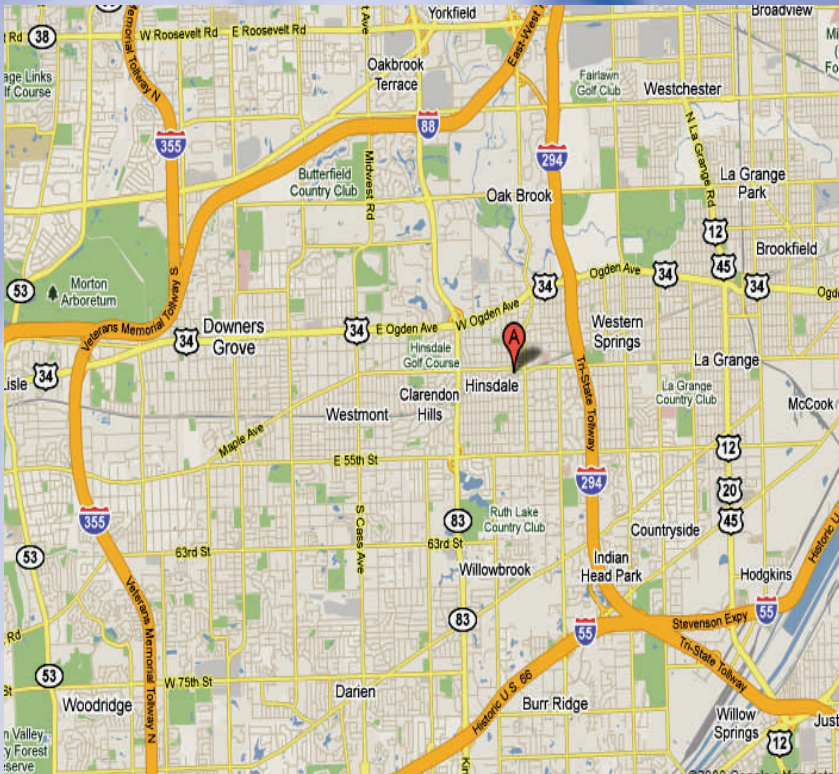
For more information contact:  
John Bell, Principal  
jbell@waypointproperties.com

Waypoint Properties, LLC  
10 West Hinsdale Avenue  
Hinsdale, IL 60521  
630-590-5501  
630-590-5502 fax  
www.waypointproperties.com



All information is deemed to be reliable sources; however no guarantee is made as to the accuracy or correctness of this information. This information is for marketing purposes only and is subject to verification, price change and removal of the property from the market.

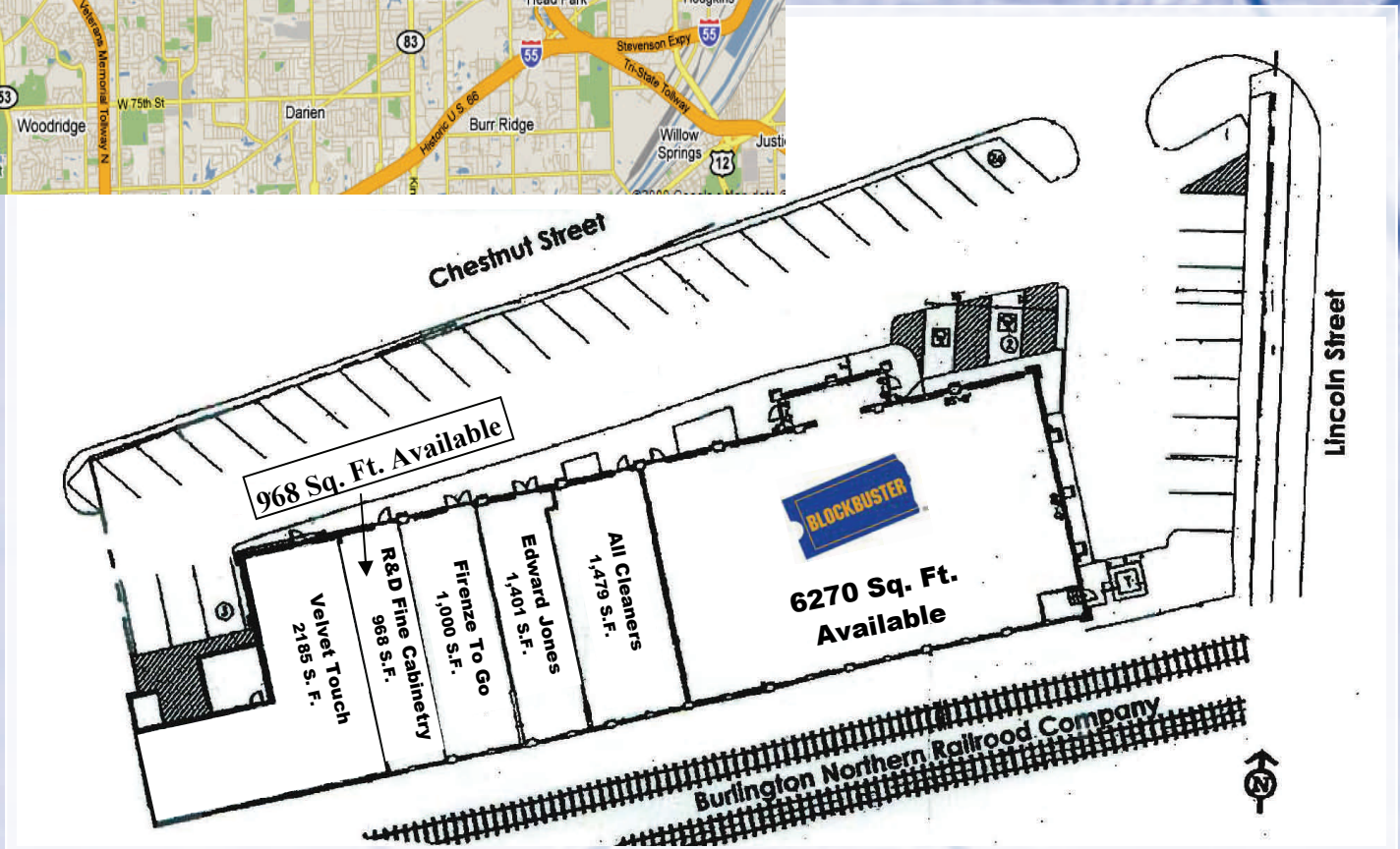
SW Corner of Chestnut and Lincoln | Hinsdale, IL  
 6,270 Sq. Ft. For Lease (can be subdivided)  
 968 Sq. Ft. For Lease



### Demographics

- ◆ Affluent trade area
- ◆ Estimated median Home value of \$849,752
- ◆ Upscale urban shops and restaurants

	1 mile	3 mile	5 mile
Population	12,957	90,482	249,269
Households	4,176	34,026	97,564
Average HH Income	\$200,272	\$129,414	\$102,372
Median Income	\$137,232	\$87,632	\$73,048



For more information contact:

**John Bell, Principal**  
 (630) 590-5501 ext. 102  
 jbell@waypointproperties.com

Waypoint Properties, LLC  
 10 West Hinsdale Avenue  
 Hinsdale, Illinois 60521  
 630-590-5501  
 630-590-5502 fax  
[www.waypointproperties.com](http://www.waypointproperties.com)

All information is deemed to be reliable sources; however no guarantee is made as to the accuracy or correctness of this information. This information is for marketing purposes only and is subject to verification, price change and removal of the property from the market.