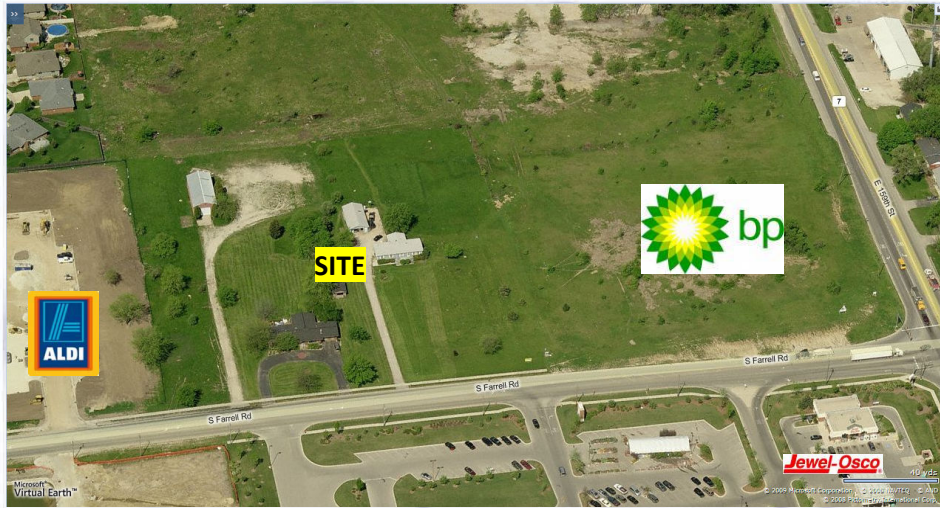
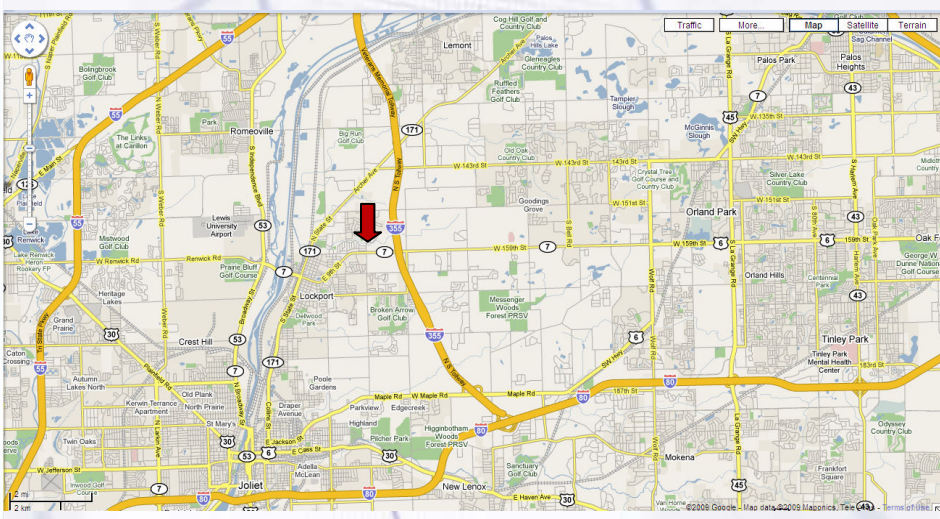


159th & Farrell Road | Lockport, IL
 Proposed 6.3 Acre Retail Development



property highlights

- ❖ 6.3 acre retail development perfect for restaurants, fast food, banks, automotive, childcare and specialty retail & service
- ❖ Build to Suit opportunities, out lots for sale and new inline retail space for lease
- ❖ Full access into center with great visibility from the intersection of 159th & Farrell Rd
- ❖ High growth residential and commercial trade area.
- ❖ Located across the street from Jewel Osco and Super Wal-Mart
- ❖ ½ mile west of new I-355 Interchange
- ❖ Lockport High School located ¼ mile from site
- ❖ Over 35,000 VPD pass through 159th & Farrell Rd

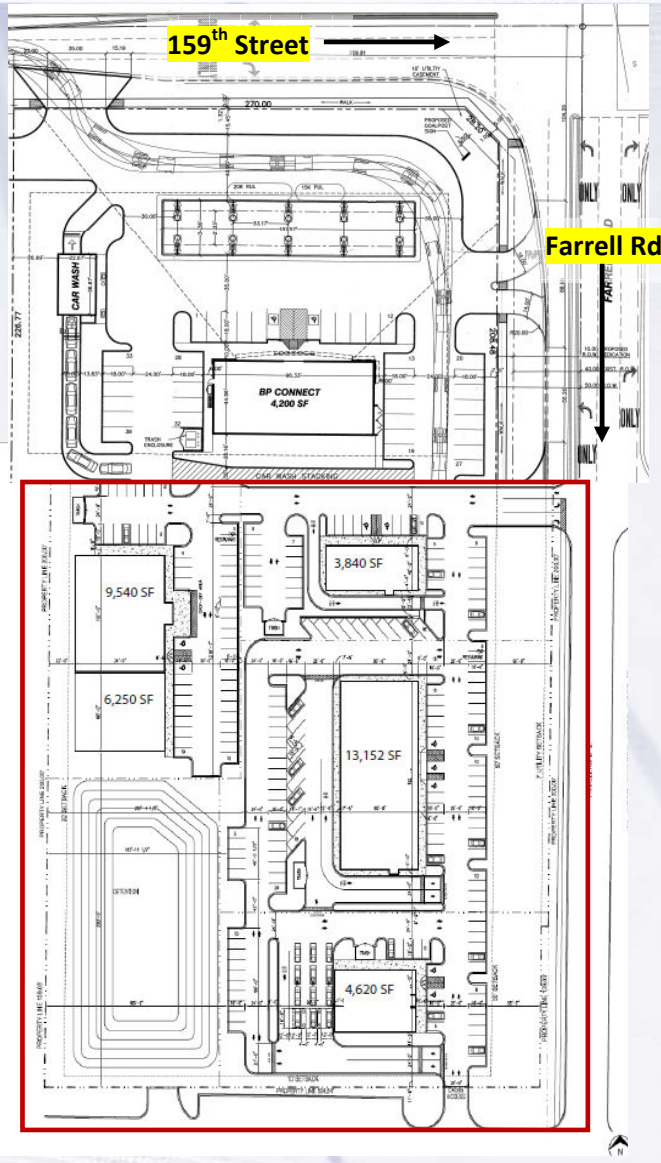


Developed By:



LOCATION FINDERS INTERNATIONAL, INC.

All information is deemed to be reliable sources; however no guarantee is made as to the accuracy or correctness of this information. This information is for marketing purposes only and is subject to verification, price change and removal of the property from the market.



Demographics

	1 Mile	3 Mile	5 Mile
Population	9,490	32,482	108,258
Number of Households	3,165	11,523	34,968
Avg. Household Income	\$83,645	\$79,938	\$78,877

For more information contact:

John Bell, Principal
 (630) 590-5501
jbell@waypointproperties.com

Waypoint Properties, LLC
 10 West Hinsdale Avenue
 Hinsdale, Illinois 60521
www.waypointproperties.com

All information is deemed to be reliable sources; however no guarantee is made as to the accuracy or correctness of this information. This information is for marketing purposes only and is subject to verification, price change and removal of the property from the market.