

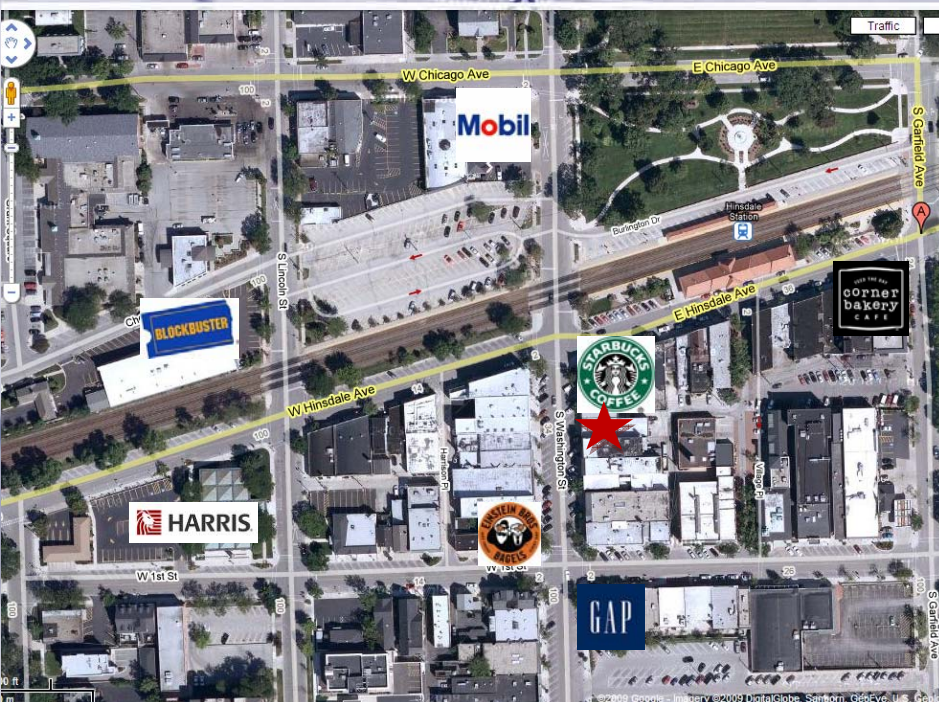
37 South Washington Avenue | Hinsdale, IL

Downtown 2nd floor space available



property highlights

- ❖ #1 corner in town
- ❖ Available 1,519 sq. ft. or 2,015 sq. ft. on second floor. Space can be combined for approximately 4,300 sq. ft.
- ❖ Ideal for salon or professional office
- ❖ Newly renovated 7,000 sq. ft. building
- ❖ Suburban downtown store front building in the heart of Hinsdale
- ❖ Across the street from the Metra Station
- ❖ Adjacent to Starbucks
- ❖ Excellent vehicular and pedestrian traffic
- ❖ Family community with substantial disposable income



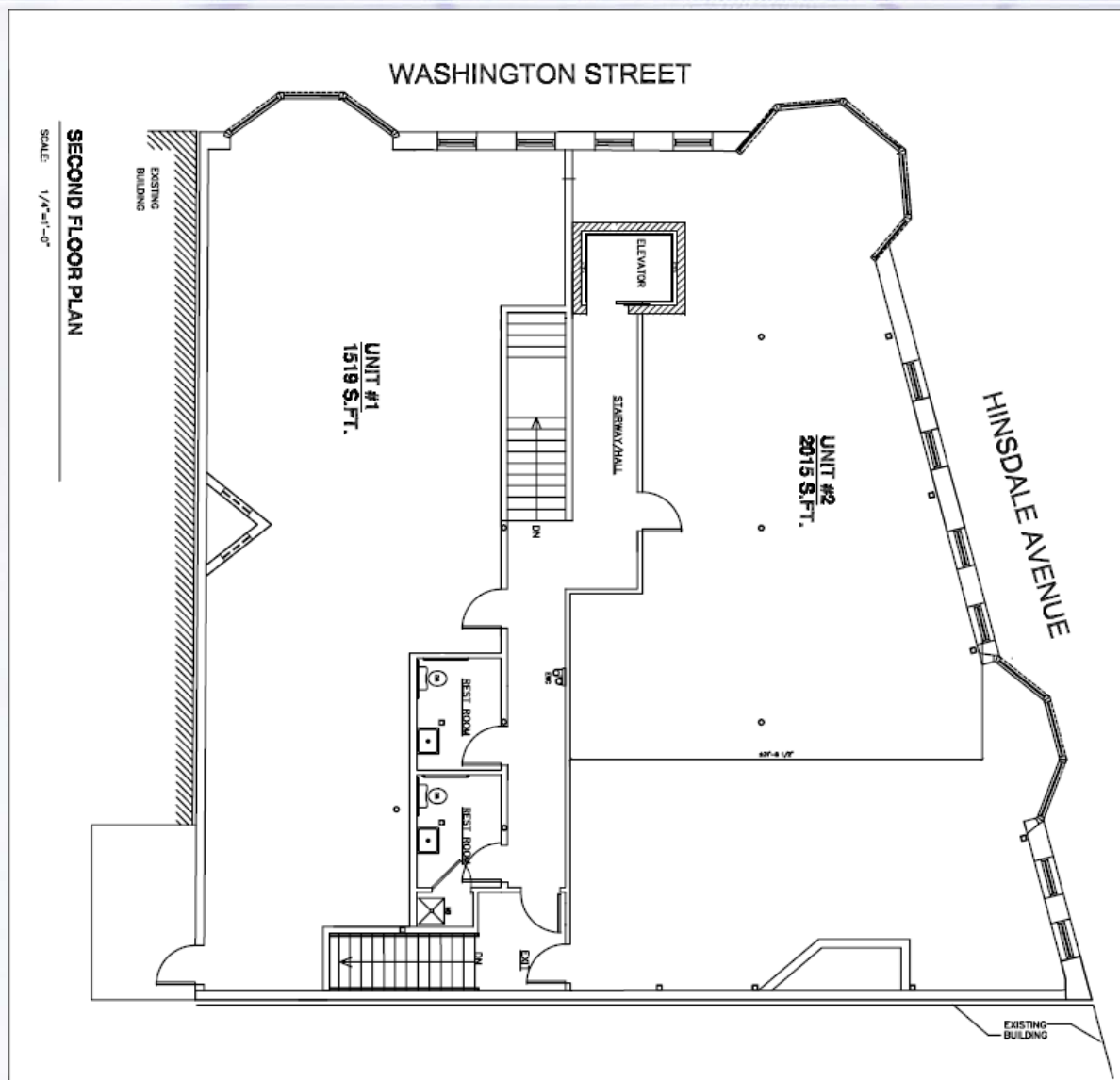
Waypoint Properties, LLC

10 West Hinsdale Ave
Hinsdale, IL 60521
(630) 590-5501

All information is deemed to be reliable sources; however no guarantee is made as to the accuracy or correctness of this information. This information is for marketing purposes only and is subject to verification, price change and removal of the property from the market.

37 South Washington Avenue | Hinsdale, IL

Downtown 2nd floor space available



Demographics

	1 mile	3 mile	5 mile
Population	12,957	90,482	249,269
Households	4,176	34,026	97,564
Average HH Income	\$200,272	\$129,414	\$102,372
Median Income	\$137,232	\$87,632	\$73,048

For more information contact:

John Bell, Principal
(630) 590-5501 x102
jbell@waypointproperties.com

Waypoint Properties, LLC
10 West Hinsdale Ave
Hinsdale, IL 60521
www.waypointproperties.com

All information is deemed to be reliable sources; however no guarantee is made as to the accuracy or correctness of this information. This information is for marketing purposes only and is subject to verification, price change and removal of the property from the market.